



**BLOOMBERG
HARVARD**

| City
Leadership
Initiative



COVID-19

SITUATION REPORT

April 9, 2020 | Joshua Sharfstein, MD



Coronavirus COVID-19 Global Cases by the Center for Systems Science and Engineering (CSSE) at Jo...



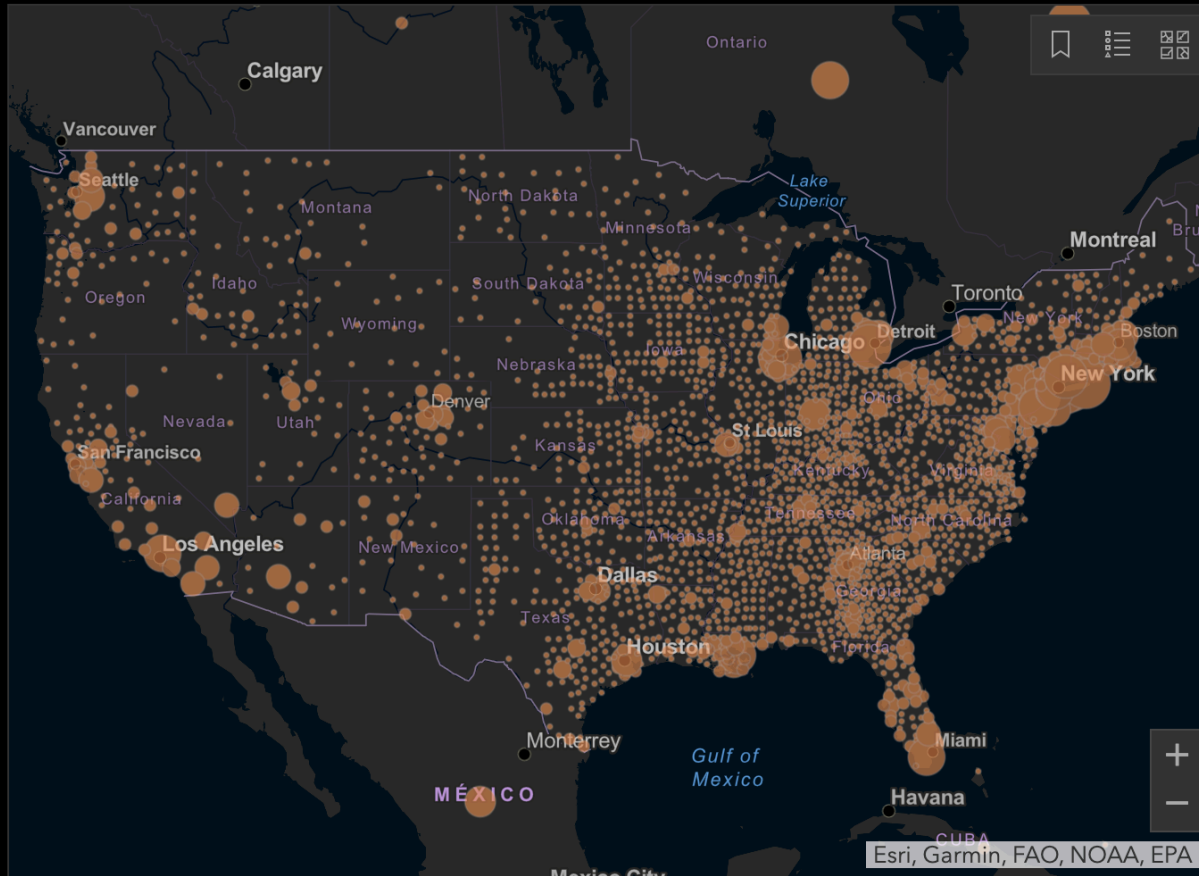
Total Confirmed
432,554

Confirmed Cases by Country/Region/Sovereignty

432,554 US
152,446 Spain
139,422 Italy
113,296 Germany
83,080 France
82,883 China
66,220 Iran
61,487 United Kingdom
38,226 Turkey
24,983 Belgium
23,612 Switzerland

Admin0

Last Updated at (M/D/YYYY)
4/9/2020, 9:38:11 AM



Cumulative Confirmed Cases | **Active Cases**

184
countries/regions

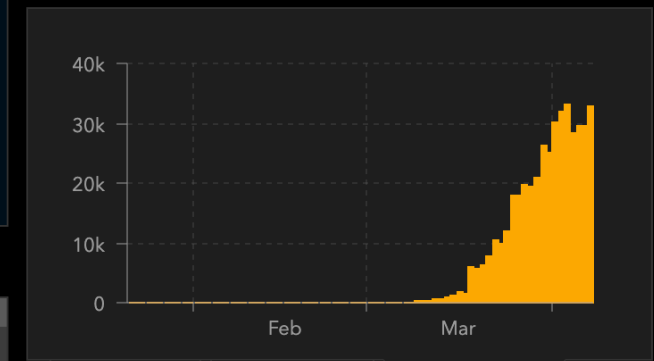
Lancet Inf Dis Article: [Here](#). Mobile Version: [Here](#). Visualization: [JHU CSSE](#). Automation Support: [Esri Living Atlas team](#) and [JHU APL](#). Contact [US](#). [FAQ](#).
Data

Total Deaths
14,829

4,571 deaths New York City New York US
566 deaths Nassau New York US
446 deaths Wayne Michigan US
323 deaths Suffolk New York US
315 deaths Westchester New York US
314 deaths Bergen New Jersey US

Total Recovered
24,213

24,213 recovered US



Confirmed | Logarithmic | **Daily Increase**



What's New This Week



Racial Disparity

Data from Detroit, Milwaukee, New Orleans, and elsewhere show disproportionate number of deaths among African Americans



For Mayors

Track data by race in your communities;
Community engagement and outreach;
Support access to testing and care; Develop services that permit isolation and quarantine



What's New This Week



Positive Signs

Washington State, Oregon and seeing plateau in cases; New York seeing slower rise



For Mayors

Social distancing works. Critical to maintain distancing to make further progress and support our ability to open up again.



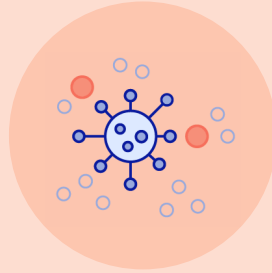
COVID-19

CONTACT TRACING

REFRESHER

WHEN

Is It Safe To Come Out Again?



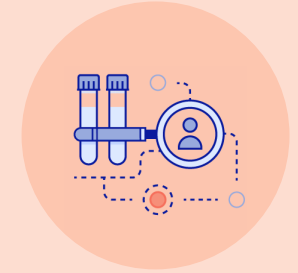
CASES NO LONGER SPREADING WIDELY

Fewer unlinked cases, falling case rates, contact tracing keeping up with case reports



STRONGER HEALTH CARE SYSTEM

Able to withstand blip of cases without risking health care worker and patient lives



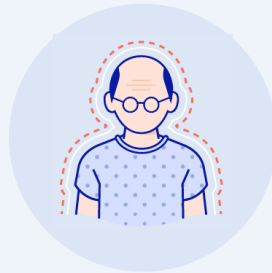
PUBLIC HEALTH CAPACITY

Test patients and trace contacts immediately, isolate the ill, quarantine contacts

REFRESHER

HOW

Do We Lift Physical Distancing Restrictions?



MEDICALLY VULNERABLE CONTINUE TO SHELTER

Potentially, those with prior illness will be protected – but we don't know this yet



PRIORITIZE SOCIETAL BENEFIT

Day care, maybe schools (protecting the vulnerable), infrastructure, partial safe re-opening, sanitizer/temp checks



PREPARE TO TIGHTEN THE FAUCET IF CASES SPIKE

Test patients and trace contacts immediately, isolate the ill, and quarantine contacts effectively

CONTACT TRACING

Contact tracing of infected patients has been used on a massive scale successfully in China, South Korea, and Singapore.

It's time to get ready for contact tracing in the United States.

FOUR KEY STEPS FOR PUBLIC HEALTH

1

Initial notification of a confirmed or presumptive case of COVID-19.

2

Interview patients, walking through entire infectious period hour-by-hour, and recalling everyone they were in contact with during that time. Provide instructions on isolation and treatment. Identify as many contacts as possible.

3

Locate and notify contacts that they have been exposed, interview them to see if they have symptoms, test if they do (and in some situations, if they don't), arrange for care if ill.

4

Monitor contacts. Daily report on symptoms and temperature for 14 days after last contact while patient was infectious.

CONTACT TRACING **KEY QUESTIONS**



Building Troops

How will your public health experts create your battalion of this army of sensitive, trained, effective contact tracers?



Reporting and Privacy Concerns

How will you get all reports and allay concerns about confidentiality and privacy?



Isolating

How to provide for voluntary isolation and quarantine?



Resources

What community resources will be available for non-hospitalized cases and their contacts?
What telemedicine/phone bank resources do you have?



Mandating Isolation and Quarantine

Is mandatory monitoring and isolation of the sick required? Mandatory monitoring and quarantine of the exposed?

RESOURCES FOR ISOLATED CASES AND QUARANTINED CONTACTS

Need incentives to manage isolation and quarantine with strong wraparound services

EXAMPLES AND IDEAS



Care packages could include

- Masks
- Thermometers
- Food, laundry, pharmacy services
- Health education materials
- Passwords for on-demand movies, e-books, learning channels
- Access to high-speed internet & laptops
- Hand sanitizer & alcohol-based cleansers
- Encouraging note from the mayor



Core resources such as

- Daily check-in phone calls
- Instructions of how to keep space clean for those sharing space
- A hotline for counseling, information, social services, and medical support
- Garbage removal
- Access to telehealth and care if ill
- Relocation to safe and desirable place, if requested



Financial support could include

- Stipend from government to those without sick leave or who need to take care of child or elderly dependents
- Work with employers to provide support, with possible tax credits

LESSONS FOR MAYORS

1

Support
Public Health!

This is a public health emergency. Only public health can lead us out of it.

2

Embrace
Accountability
and Learning!

Daily public dissemination of key metrics on testing, isolation, contact tracing, quarantine. Learn continuously to improve continuously.

3

THINK BIG!!

Massive (100x) expansion of care force to support, track, and care for every case and contact fast and well.

CONTACT TRACING

Ebola Case Study

In 2014, Dallas had first case of Ebola in U.S. Local government led effort to respond. County Judge Clay Jenkins headed up effort in coordination with the CDC.

Lessons Learned

1 Media attention can be intense. Patient privacy comes first.

3 Irrational fears can drive action, but rational fears must be addressed.

2 Local officials are best placed to identify local strengths and resources.

4 Health care workers are on the front lines and must be supported.

The New York Times

Dallas Official Confronts City's Fear of Ebola in Person

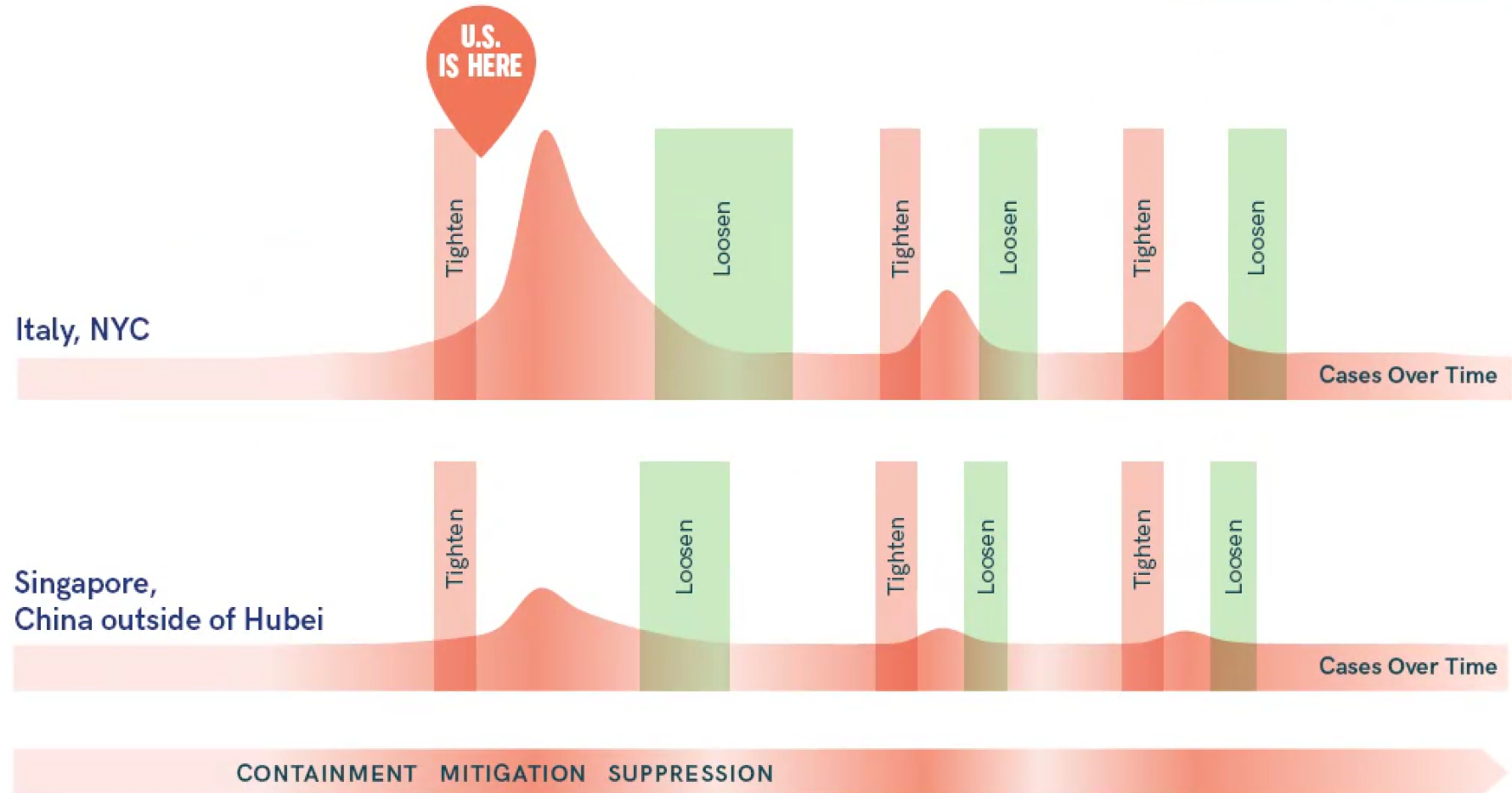


Judge Clay Jenkins of Dallas County visited the apartment where Thomas Eric Duncan had been staying before his Ebola was diagnosed. Larry W. Smith/European Pressphoto Agency

ADAPTIVE RESPONSE

Loosen or tighten physical distancing according to levels of:

- Virus transmission
- Healthcare preparedness
- Public Health capacity



APRIL 9, 2020

QUESTIONS?

Joshua Sharfstein, MD

Tom Frieden, MD



JOHNS HOPKINS
BLOOMBERG SCHOOL
of PUBLIC HEALTH

RESOLVE |
| **TO SAVE LIVES**
AN INITIATIVE OF VITAL STRATEGIES



**BLOOMBERG
HARVARD**

| City
Leadership
Initiative