

A scenic landscape photograph showing a vast mountain range under a cloudy sky. In the foreground, there are large, light-colored rocks and dense green forest. A small lake is visible in the middle ground, nestled between the mountains. The overall scene is a mix of rugged terrain and lush vegetation.

Wildlands and Woodlands

A Vision for the New England Landscape

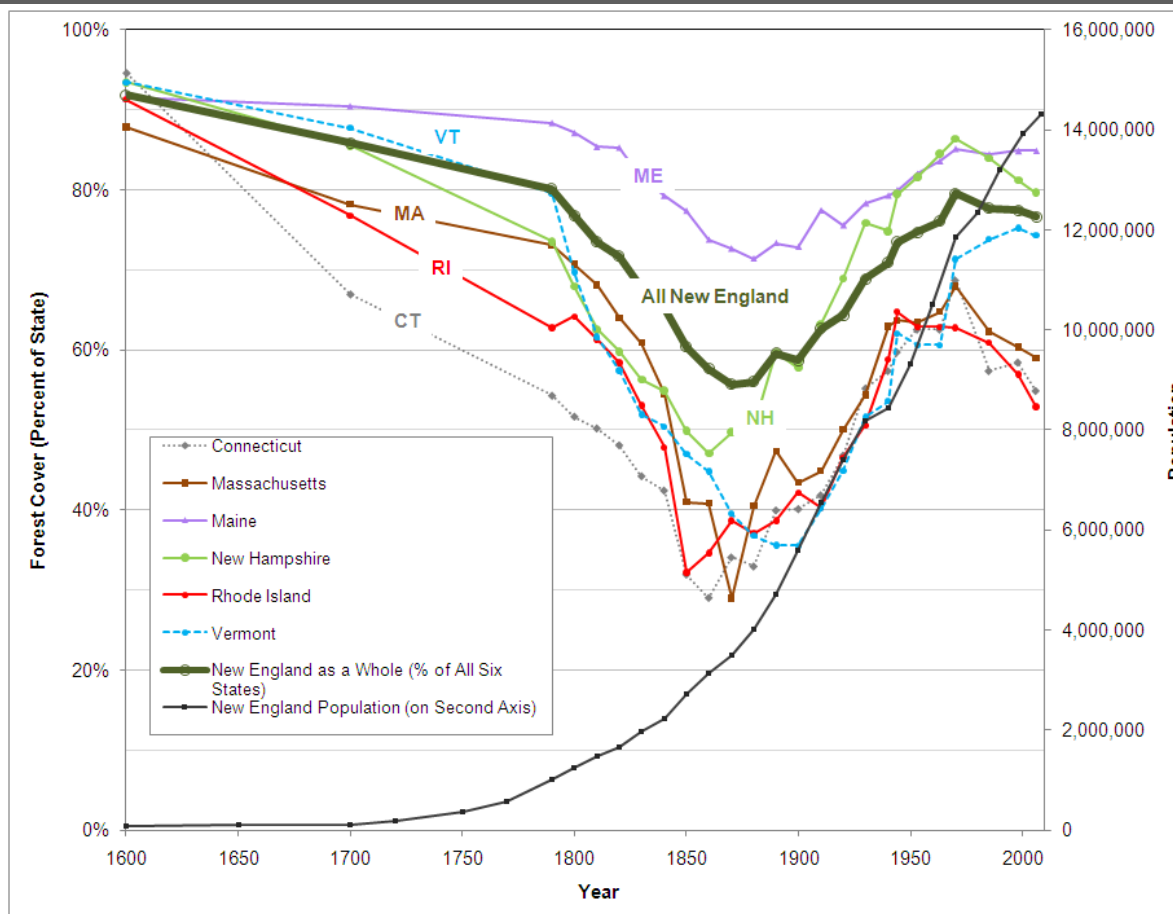
John D. Aber *University of New Hampshire*
Charles V. Cogbill *Sterling College, Vermont*
Elizabeth A. Colburn *Harvard Forest, Harvard University*
Anthony W. D'Amato *University of Minnesota*
Brian M. Donahue *Brandeis University*
Charles T. Driscoll *Syracuse University*
Aaron M. Ellison *Harvard Forest, Harvard University*
Timothy J. Fahey *Cornell University*
David R. Foster *Harvard Forest, Harvard University*
Brian R. Hall *Harvard Forest, Harvard University*
Clarisse M. Hart *Harvard Forest, Harvard University*
Malcolm L. Hunter *University of Maine, Orono*
Lloyd C. Irland *Yale University*
William S. Keeton *University of Vermont*
David B. Kittredge *University of Massachusetts*
Kathleen F. Lambert *Harvard Forest, Harvard University*
James N. Levitt *Harvard Forest, Harvard University*
Robert J. Lilieholm *University of Maine*
David A. Orwig *Harvard Forest, Harvard University*
Jonathan R. Thompson *Smithsonian Institution*

W&W Authors



History Inspiring Conservation

Forest Cover and Population Trends in New England



1880 – Agriculture dominated



2010 – Forest dominated



2060 – ???



Threats

Deforestation

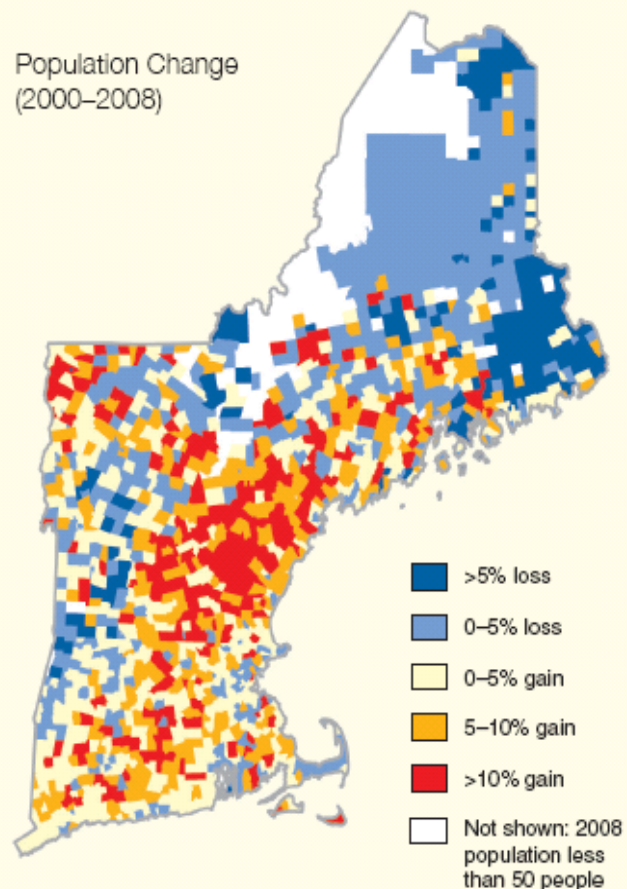
Perforation

Degradation

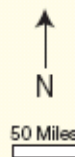
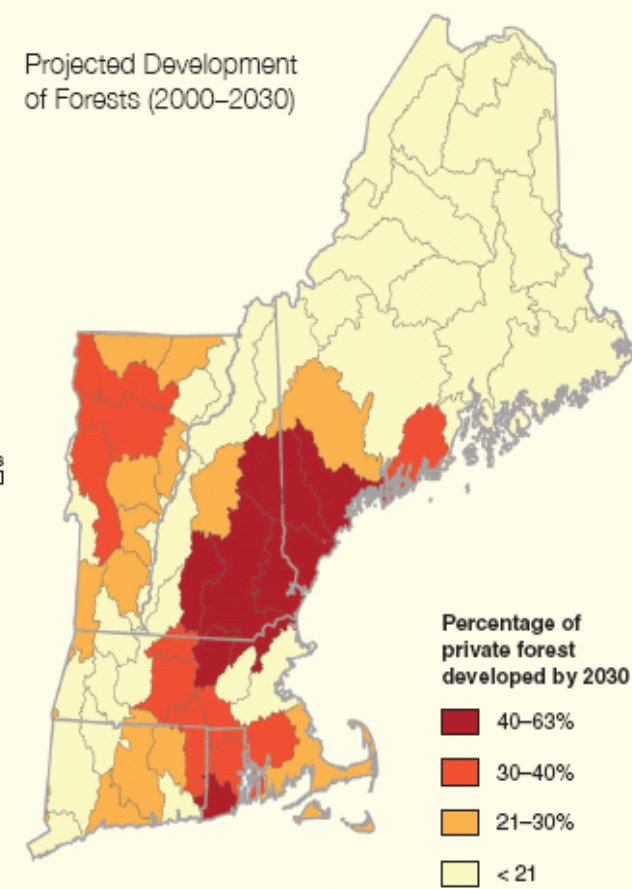


Recent Population Change and Future Development of Forest Land

Population Change
(2000–2008)



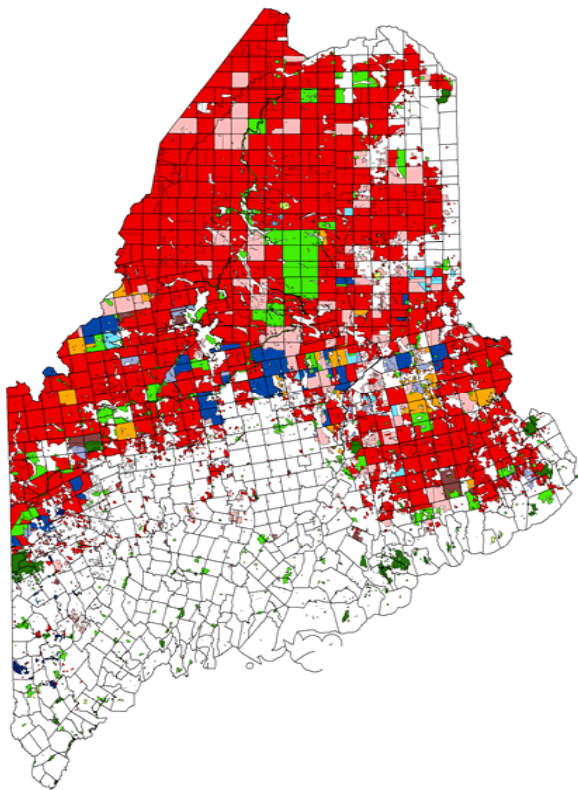
Projected Development
of Forests (2000–2030)



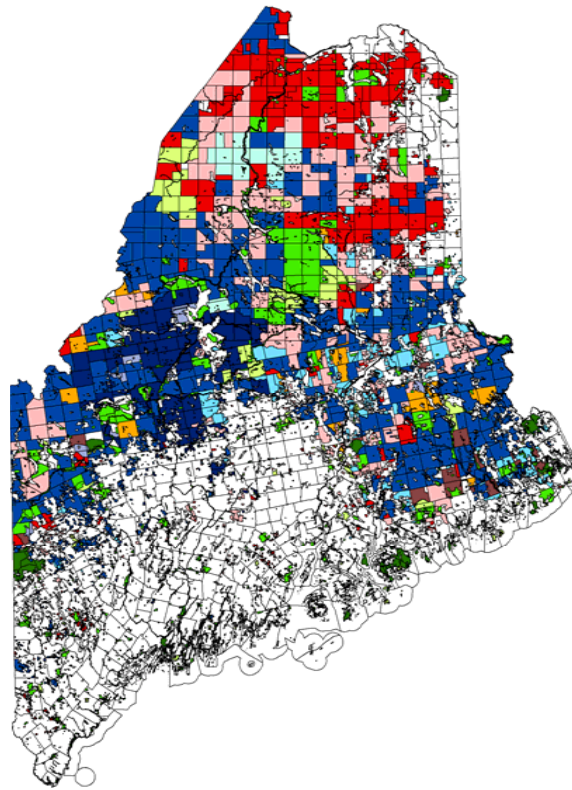
Threats

Change in Ownership & Management

Changes in Forest Ownership – Northern Maine



1994



2009

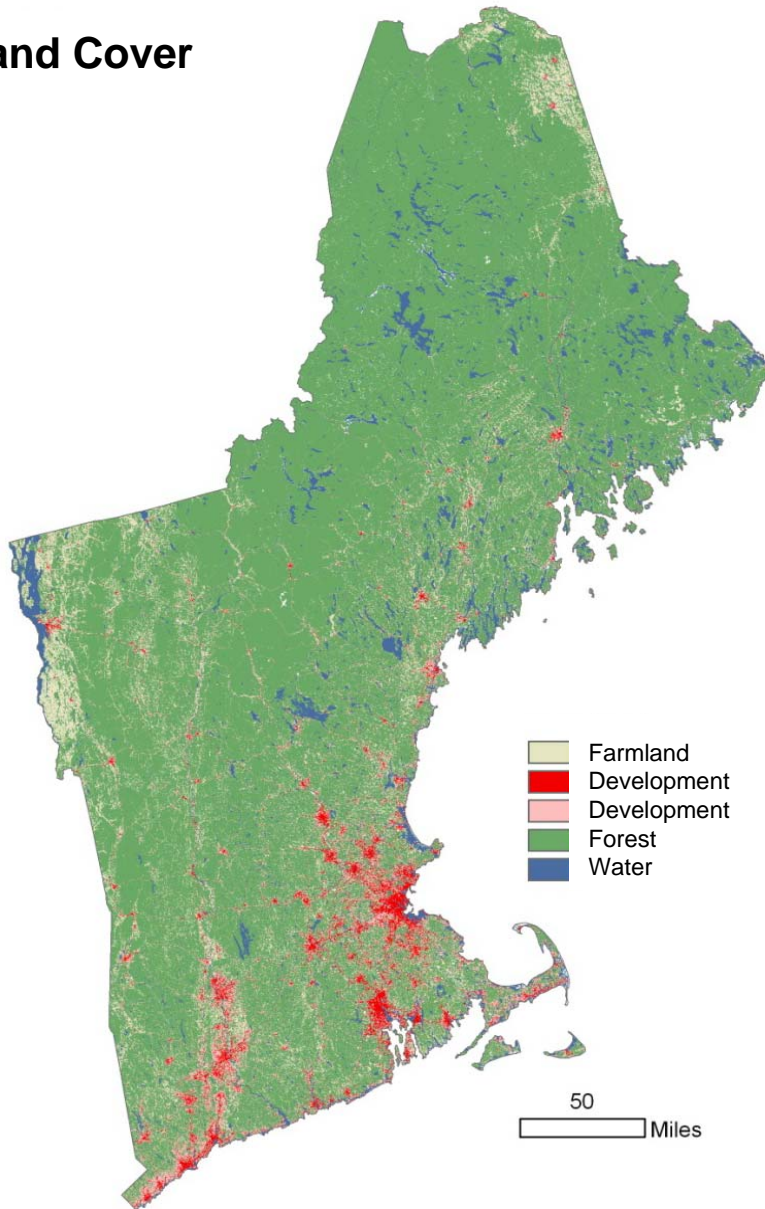
Copyright 2010 - James W. Sewall Co., Old Town, Maine

Legend

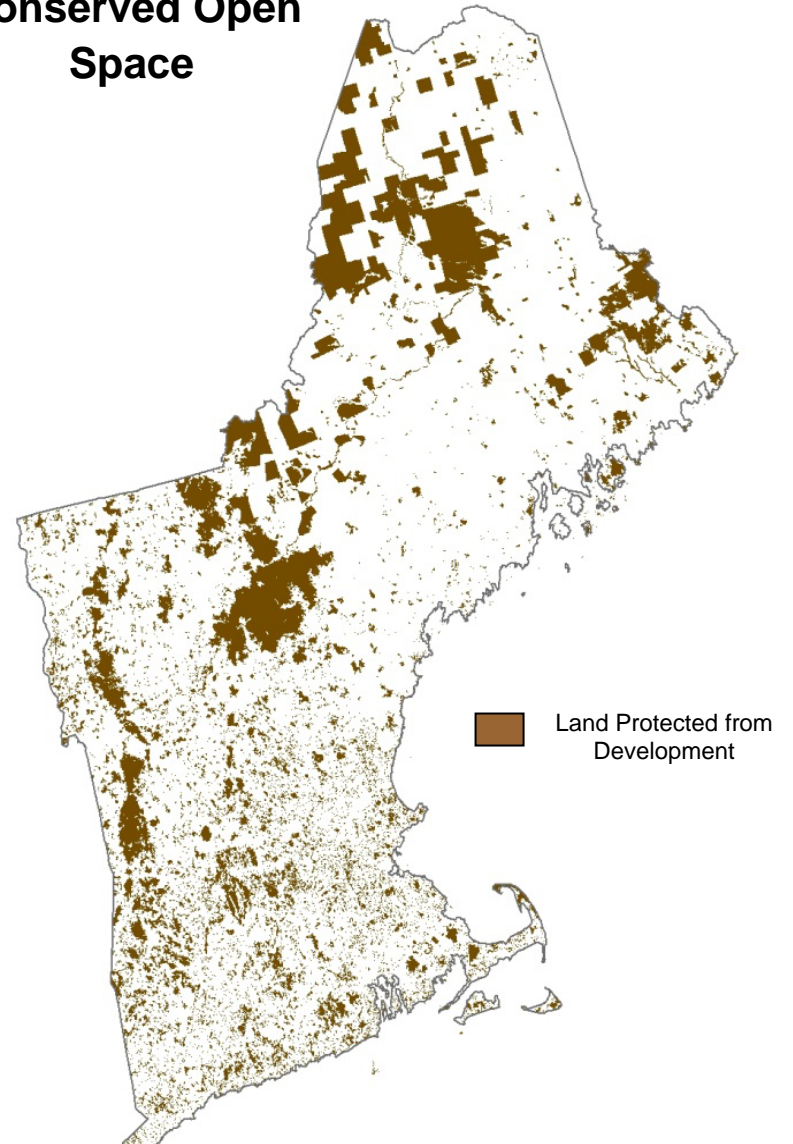
- Industry
- Old-line Family
- REIT
- Financial Investor
- Developer
- Contractor/New Timber Baron
- Individual/Family
- Tribal
- Federal
- Public (state)
- Non-profit
- Other

Two Remarkable Products of History

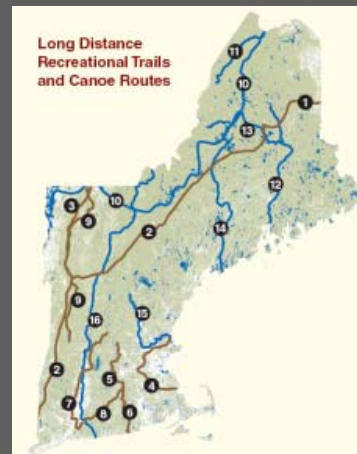
Land Cover



Conserved Open Space



Forests = Direct Economic Benefits

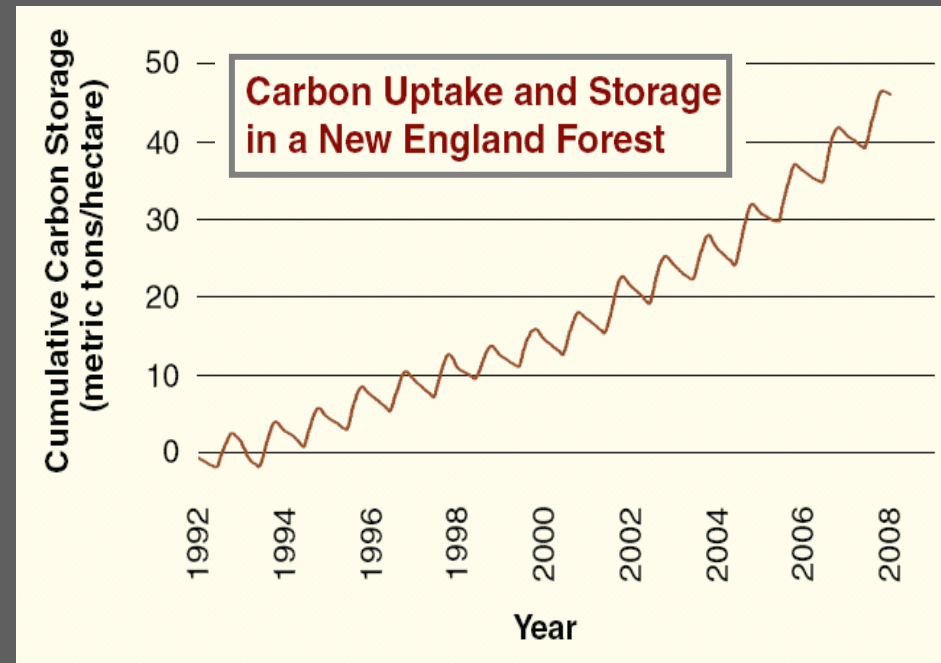


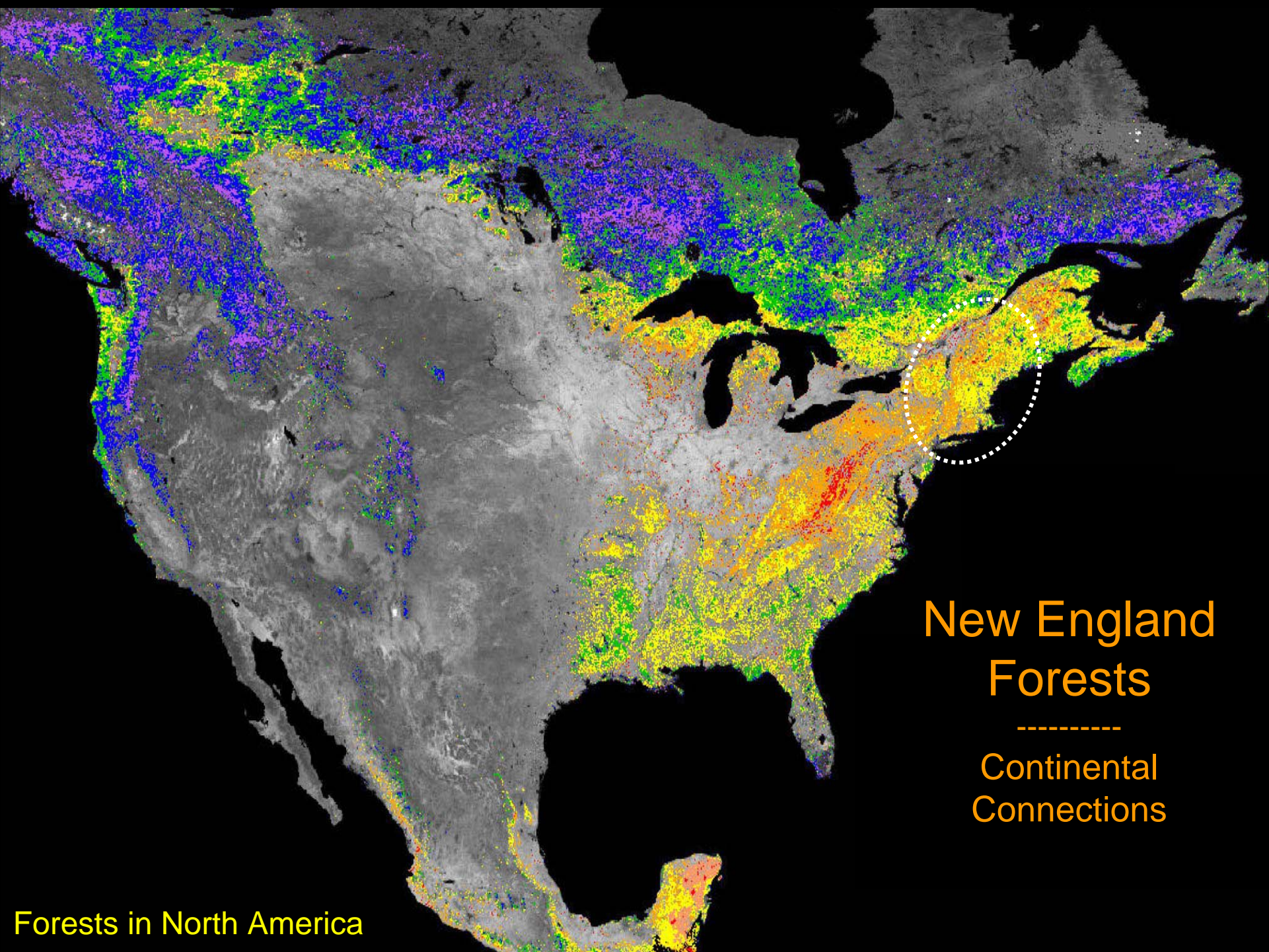
Forests = Critical Infrastructure



New England Forests

Globally important carbon storage
and climate mitigation





New England
Forests

Continental
Connections

Forests in North America

Conservation of Landscapes, Communities and Lifestyles



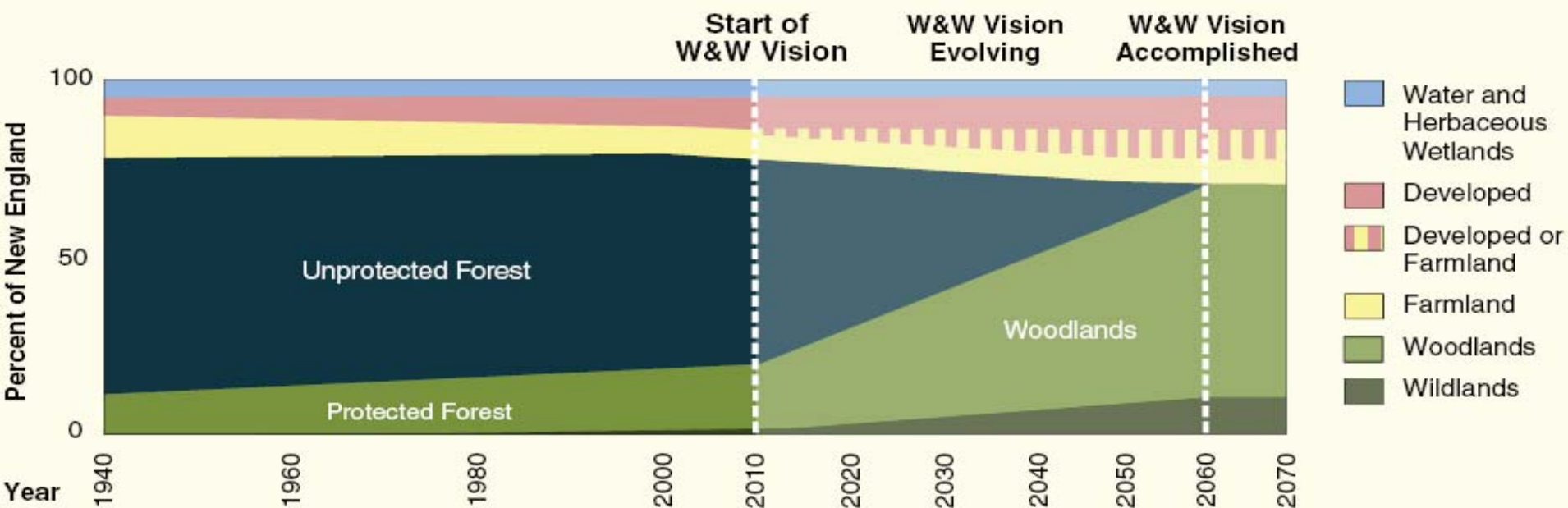
The *Wildlands and Woodlands* Vision

Conserve at Least 70% of New England in Forest

Protect 30 million acres of New England's existing 33 million acres of forest

Retain or increase farmland (>7% of land)

Allow for up to a doubling of current developed areas

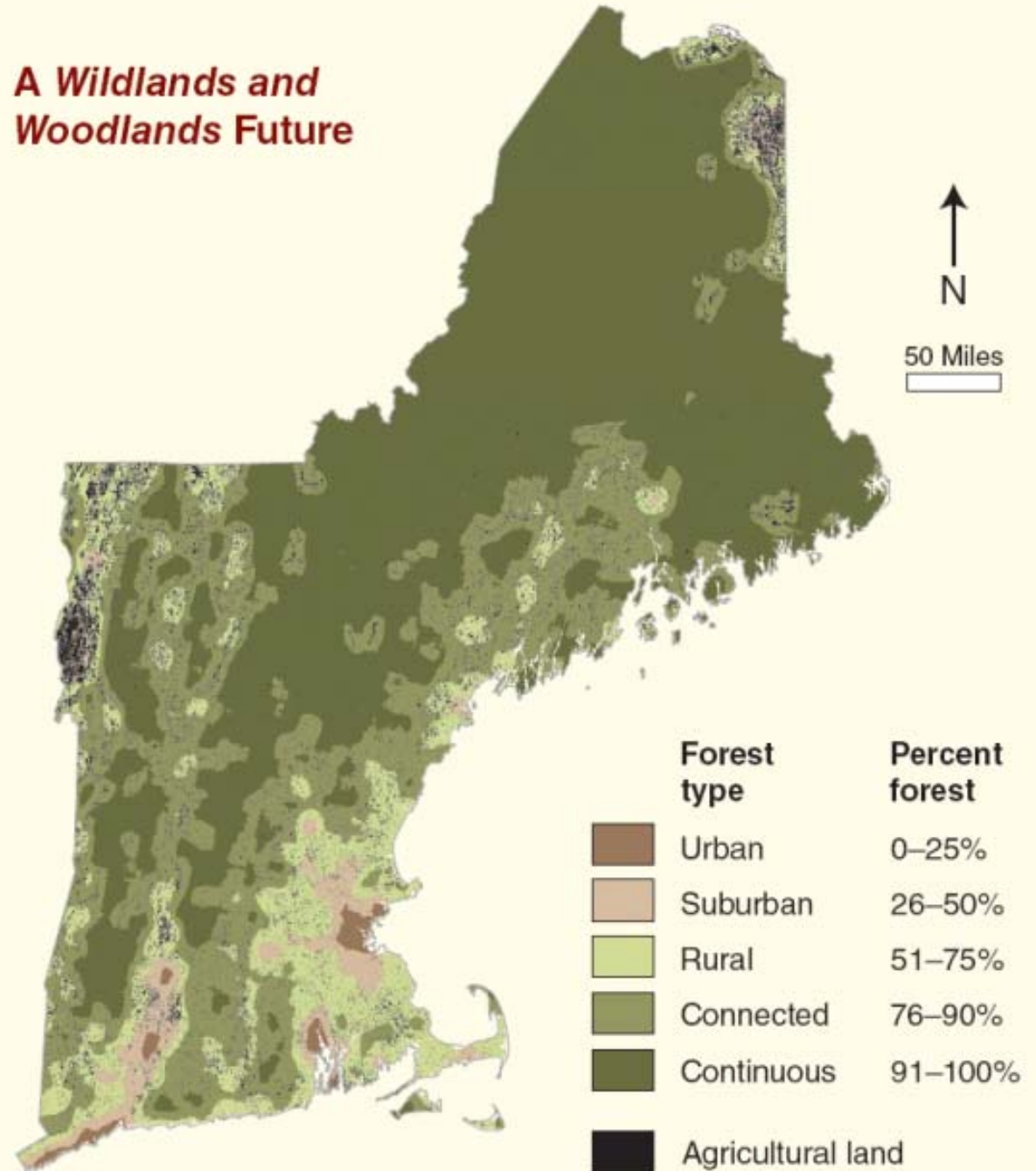


Conservation

On private land
through conservation
easements

Shaped by local
conditions and
interest

A Wildlands and Woodlands Future



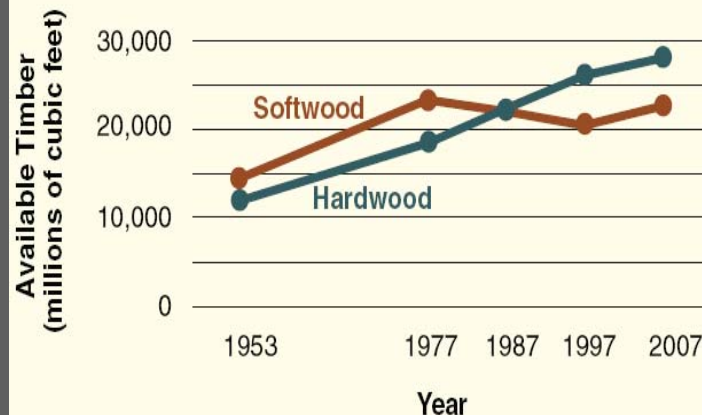
Managed Woodlands

**90% of forest land
63% of New England
~27 million acres**

**Well-managed forests
permanently conserved**



Changes in New England Timber Volume



Wildland Reserves

**10% of forest land
7% of New England
~3 million acres**

Large forest landscapes shaped by
natural processes and largely free
from human impact



Achieving the Vision

Over the next 50 years we must double our rate of land conservation through:

- Existing conservation capacity
- Large-scale conservation
- Increased funding
- Policy and planning tools



Regional Conservation Partnerships



W&W Partnership - more than 60 local and regional organizations and agencies



Aggregation

Multiple landowners advancing conservation across many parcels
e.g., Massachusetts – Tully project and W Mass Aggregation Project

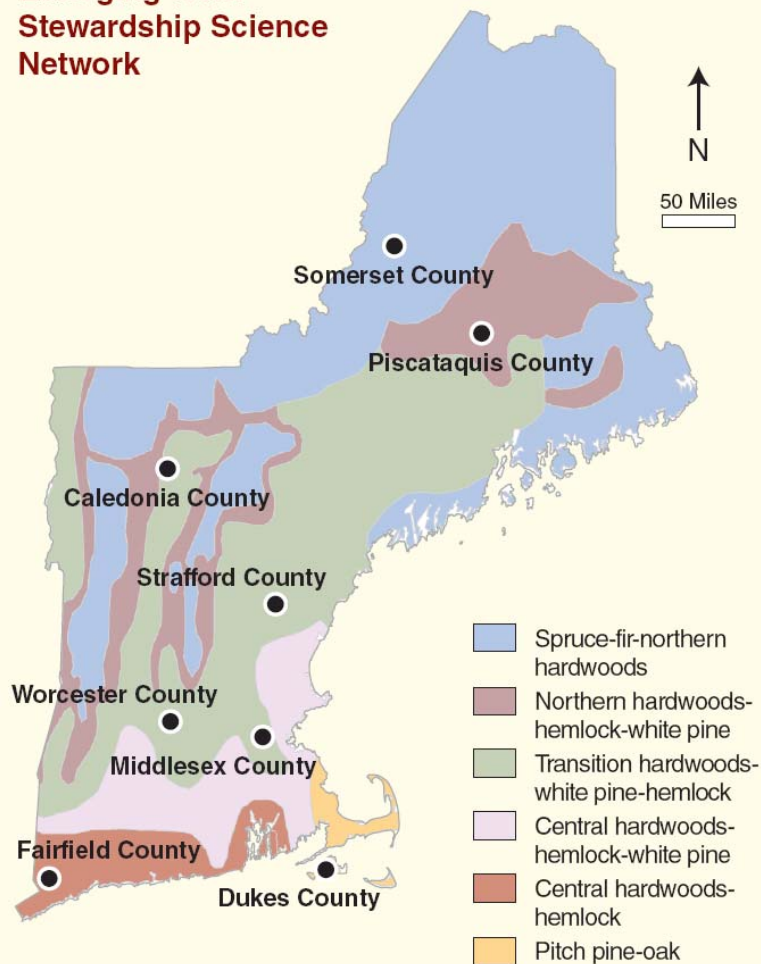
Expanding Conservation Finance

New thinking – Investment in Natural Infrastructure

From Vision to Action

- Landowners and citizens
- NGOs, land trusts, and agencies
- State, local and federal governments

Emerging W&W Stewardship Science Network



Measuring Forest Change

Evaluating Management Success



Another Turning Point



For Copies of the Report and Information

Google “Wildlands and Woodlands”

Harvard University Press

Harvard Forest



Wildlands and Woodlands



*A Vision
for
the Forests
of
Massachusetts*

2005

